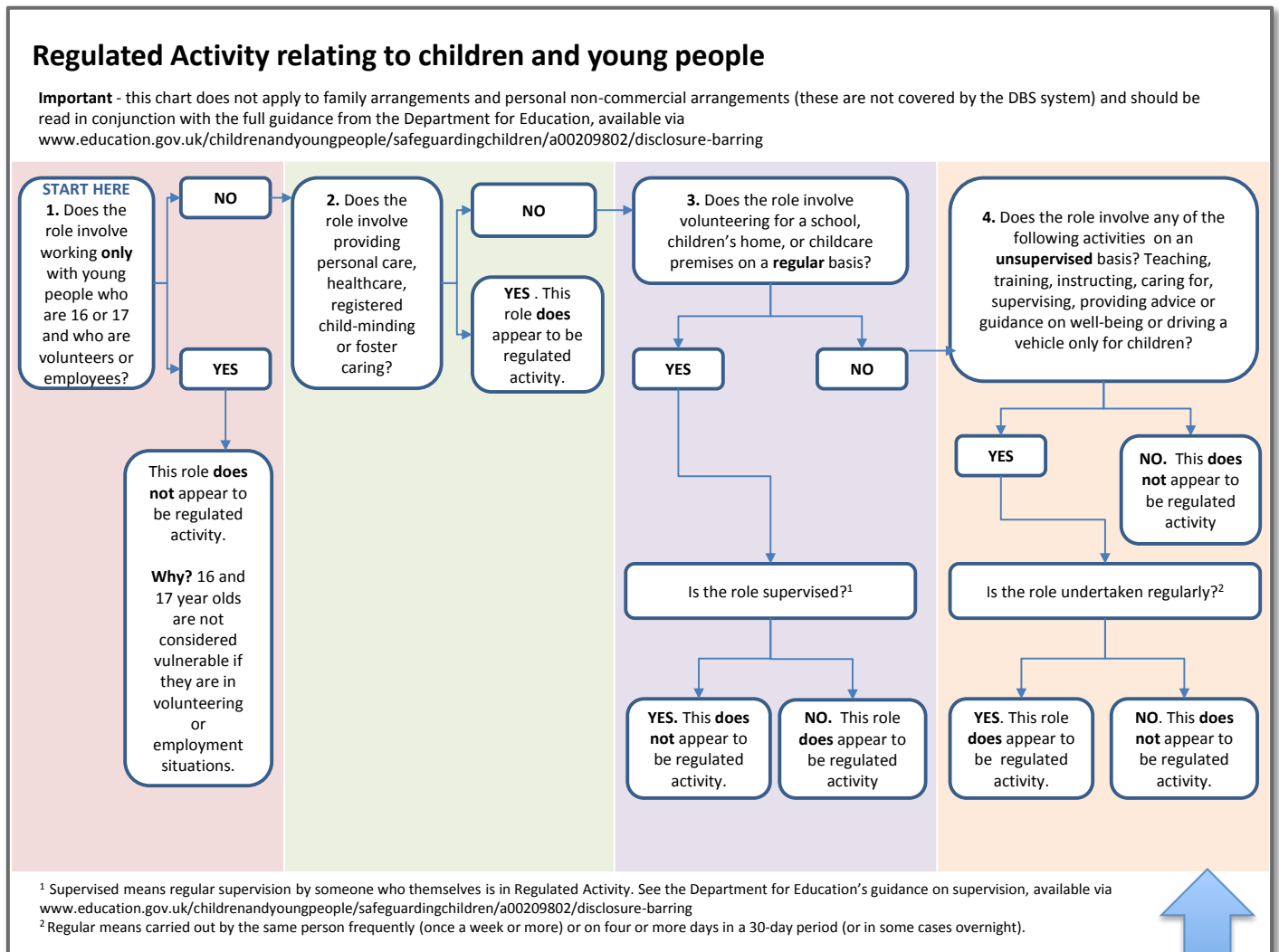


DBS checks for Volunteers in Schools- Eye Heroes

This document outlines the recommendations for schools and after-school clubs with regards DBS checks and the circumstances under which the Home Office advises that these check be carried out on volunteers



Update from the DBS Guidance on Volunteers at Schools-

https://www.gov.uk/government/uploads/system/uploads/attachment_data/file/170637/dbs01007-checks-on-vols.pdf

'From September 2012, individuals volunteering in schools in England were no longer regarded as working in regulated activity if they are properly supervised. Therefore a check of the DBS barred lists is not required. However, Enhanced certificates without a barred list check remain available; it is within the discretion of the school if they choose to undertake them.'

For further examples of how to use this guidance please refer to <http://media.education.gov.uk/assets/files/pdf/s/supervision%20guidance%20revised%20sos%20sept%202012.pdf>

Statutory guidance: Regulated Activity (children) - supervision of activity with children which is regulated activity when unsupervised

EXAMPLES

Volunteer, in a specified place

Mr Jones, a new volunteer, helps children with reading at a local school for two mornings a week. Mr Jones is generally based in the classroom, in sight of the teacher. Sometimes Mr Jones takes some of the children to a separate room to listen to them reading, where Mr Jones is supervised by a paid classroom assistant, who is in that room most of the time. The teacher and classroom assistant are in regulated activity. The head teacher decides whether their supervision is such that Mr Jones is not in regulated activity.

Volunteer, not in a specified place

Mr Wood, a new entrant volunteer, assists with the coaching of children at his local cricket club. The children are divided into small groups, with assistant coaches such as Mr Wood assigned to each group. The head coach oversees the coaching, spends time with each of the groups, and has sight of all the groups (and the assistant coaches) for most of the time. The head coach is in regulated activity. The club managers decide whether the coach's supervision is such that Mr Wood is not in regulated activity.

Employee, not in a specified place

Mrs Shah starts as a paid activity assistant at a youth club. She helps to instruct a group of children, and is supervised by the youth club leader who is in regulated activity. The youth club managers decide whether the leader's supervision is such that Mrs Shah is not in regulated activity.

In each example, the organisation uses the following steps when deciding whether a new worker will be supervised to such a level that the new worker is not in regulated activity:

- Consider whether the worker is doing work that, if unsupervised, would be regulated activity. If the worker is not, the remaining steps are unnecessary;
- Consider whether the worker will be supervised by a person in regulated activity, and whether the supervision will be regular and day to day, bearing in mind paragraph 4 of this guidance;
- Consider whether the supervision will be reasonable in all the circumstances to ensure the protection of children, bearing in mind the factors set out in paragraph 5 of this guidance; and if it is a specified place such as a school:
- Consider whether the supervised worker is a volunteer.

Department for Education / Department of Health, Social Services and Public Safety (Northern Ireland), September 201